

Assessment Services Branch

Designated Industrial Property – Organizational Structure

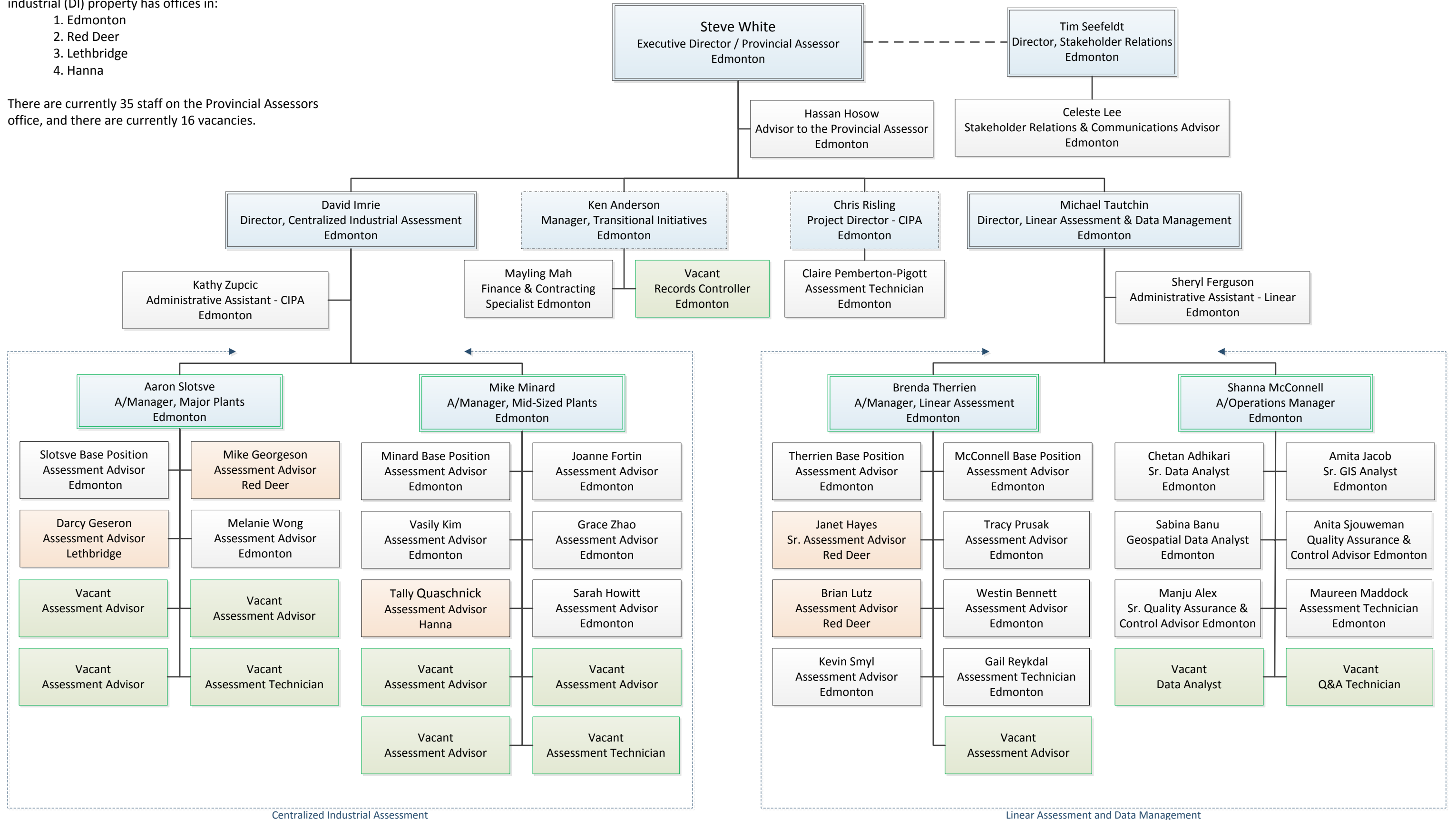
Management Position
Permanent Position
Temporary Salaried Position
Vacant Position

Notes:

The Provincial Assessor responsible for designated industrial (DI) property has offices in:

1. Edmonton
2. Red Deer
3. Lethbridge
4. Hanna

There are currently 35 staff on the Provincial Assessors office, and there are currently 16 vacancies.



Centralized Industrial Assessment

Linear Assessment and Data Management